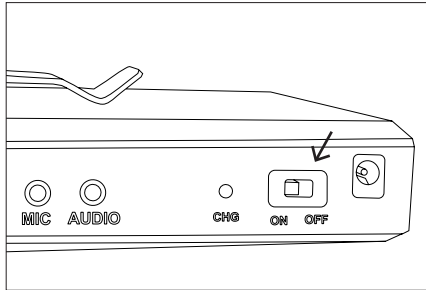
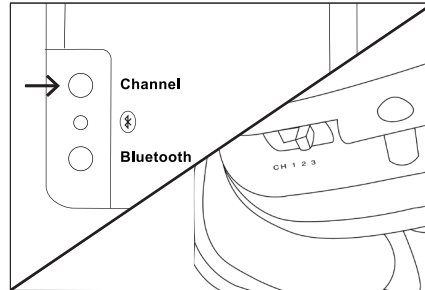




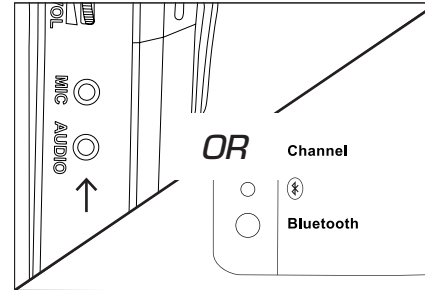
# BOLT 2.1/2.2 TRANSMITTER SETUP GUIDE WITH GLO 2 HEADPHONES



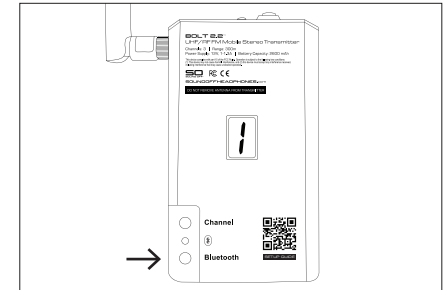
1. Turn on your Bolt 2.1/2.2 Transmitter using the ON/OFF switch found on the side of the unit.



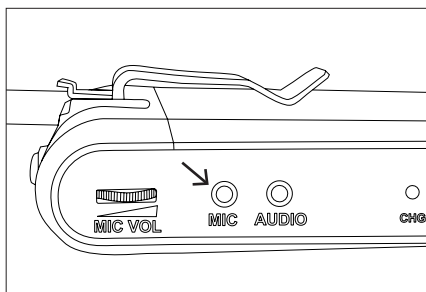
2. Using the CHANNEL button on your transmitter, choose channel 1, 2, or 3 to broadcast an audio signal. Make sure that your GLO 2 headphones are set to receive the same channel. The headphones' power and channel switches are located on the left ear.



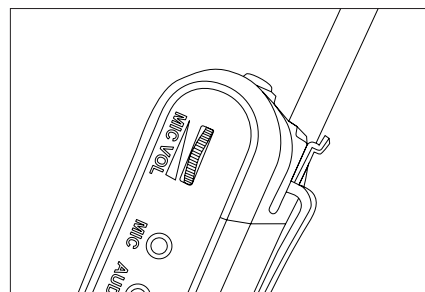
3. If using a playback device such as a phone, laptop, or mixer, connect it to your Bolt 2.1/2.2 using either the stereo AUDIO input jack or the Bluetooth connection. Set your playback device's volume to about 90%. **Warning: do not plug any device except for a microphone into the MIC jack. Doing so may cause distortion and can damage your transmitter.**



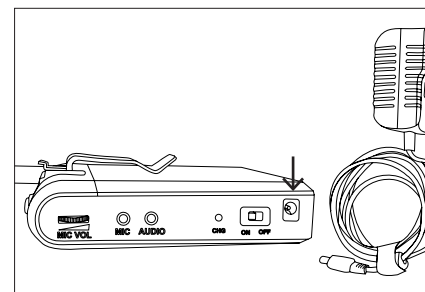
4. Put the transmitter into pairing mode by holding down the BLUETOOTH button until the LED flashes **RED AND BLUE**. The transmitter will appear in your device's Bluetooth menu as "Bolt 2.2" or "TX60RF." The LED will turn solid blue to indicate a successful Bluetooth connection. Hold down the BLUETOOTH button again to disable the connection. Enabling the Bluetooth connection automatically mutes the AUDIO input jack.



5. If using a mic, connect it to the Bolt 2.1/2.2's MIC input jack. **To enable the mic, press the button on the top of the transmitter.** The LED on top will turn red, indicating that the mic is on. Press the button again to mute the mic. The LED on top of the transmitter will turn off when the mic is muted.



6. Control the mic's volume using the MIC VOL dial on the side of the transmitter.



7. To recharge your Bolt 2.1/ 2.2's battery, connect the AC power adapter to wall power. The CHG LED will turn from red to green when the transmitter is fully charged.